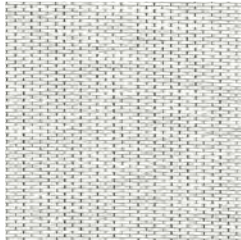
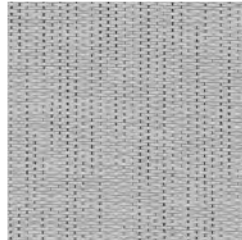


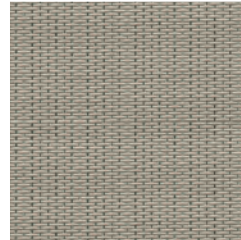
CHROMA COLLECTION



Pure White



Ash



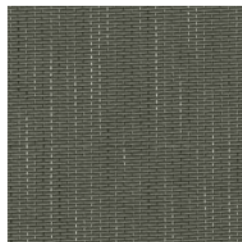
Taupe



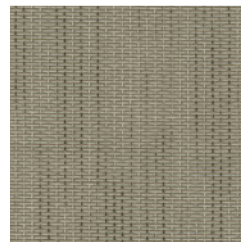
Desert



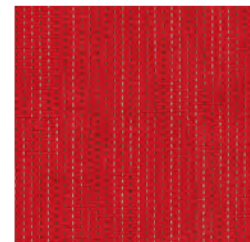
Macchiato



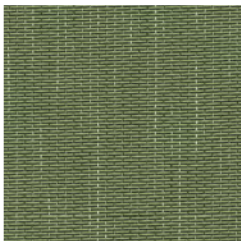
Faded Denim



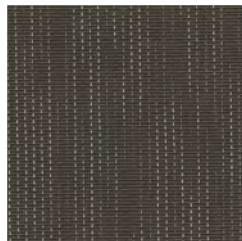
Golden Beach



Red



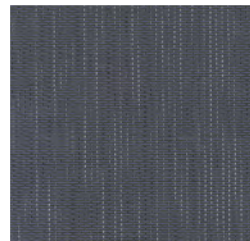
Jungle



Dark Slate



Bronze



Parisian Blue



Roll 200 cm

Supply and installation of woven vinyl flooring Fitnice Chroma (add color) in roll format of 2 m width and 2,70 mm thick, antistatic and flexible. Fabric composed of 91% vinyl and 9% monofilament polyester and backing of vinyl reinforced with fiberglass. Impact sound reduction of 14 dB. Indicated for intensive use according to EN 985: 2002 castor chair test, heavy commercial use according to EN 1307: 2014 standard. With antibacterial behaviour according to ASTM E 2180-07 (2012) and antifungal according to ASTM G21: 2013 standard. Meets the fire resistance requirement (Bfls1) according to EN 13501: 2007. Phthalates and Antimony free. Low level of VOC emissions - Floorscore® certified. Environmental Product Declaration (EPD) available. Installed on a solid, flat, clean, perfectly dry base (3% maximum humidity) and without cracks, according to the UNE-CEN / TS 14472 standard (parts 1 and 4); installed by overlap and cut and fixed with the adhesive recommended by the manufacturer, pressed with heavy roller (> 50kg) and joints sealed with cold welding adhesive.



Tile 50x50 cm

Supply and installation of woven vinyl flooring Fitnice Chroma (add color) in square format of 50 x 50 cm and 2.70 mm thick, antistatic and flexible. Fabric composed of 91% vinyl and 9% monofilament polyester and backing of vinyl reinforced with fiberglass. Impact sound reduction of 14 dB. Indicated for intensive use according to EN 985: 2002 castor chair test, heavy commercial use according to EN 1307: 2014 standard. With antibacterial behaviour according to ASTM E 2180-07 (2012) and antifungal according to ASTM G21: 2013 standard. Meets the fire resistance requirement (Bfls1) according to EN 13501: 2007. Phthalates and Antimony free. Low level of VOC emissions - Floorscore® certified. Environmental Product Declaration (EPD) available. Installed on a solid, flat, clean, perfectly dry base (3% maximum humidity) and without cracks, according to the UNE-CEN / TS 14472 standard (parts 1 and 4); installed in a checkerboard pattern, fixed with the adhesive recommended by the manufacturer and pressed with heavy roller (> 50kg).



Tile Loose-lay 50x50 cm

Supply and installation of woven vinyl flooring Fitnice Chroma (add color) in square format of 50 x 50 cm and 3,35 mm thick, antistatic and flexible. Fabric composed of 91% vinyl and 9% monofilament polyester and backing of vinyl reinforced with fiberglass. Impact sound reduction of 15 dB. Indicated for intensive use according to EN 985: 2002 castor chair test, heavy commercial use according to EN 1307: 2014 standard. With antibacterial behaviour according to ASTM E 2180-07 (2012) and antifungal according to ASTM G21: 2013 standard. Meets the fire resistance requirement (Bfls1) according to EN 13501: 2007. Phthalates and Antimony free. Low level of VOC emissions - Floorscore® certified. Environmental Product Declaration (EPD) available. Installed on a solid, flat, clean, perfectly dry base (3% maximum humidity) and without cracks, according to the UNE-CEN / TS 14472 standard (parts 1 and 4); Indicated to be installed on properly levelled raised access floor. Installed in a checkerboard pattern, fixed with the adhesive recommended by the manufacturer and pressed with heavy roller (> 50kg).



Tile 100x100cm

Supply and installation of woven vinyl flooring Fitnice Chroma (add color) in square format of 100 x 100 cm and 2.70 mm thick, antistatic and flexible. Fabric composed of 91% vinyl and 9% monofilament polyester and backing of vinyl reinforced with fiberglass. Impact sound reduction of 14 dB. Indicated for intensive use according to EN 985: 2002 castor chair test, heavy commercial use according to EN 1307: 2014 standard. With antibacterial behaviour according to ASTM E 2180-07 (2012) and antifungal according to ASTM G21: 2013 standard. Meets the fire resistance requirement (Bfls1) according to EN 13501: 2007. Phthalates and Antimony free. Low level of VOC emissions - Floorscore® certified. Environmental Product Declaration (EPD) available. Installed on a solid, flat, clean, perfectly dry base (3% maximum humidity) and without cracks, according to the UNE-CEN / TS 14472 standard (parts 1 and 4); installed in a checkerboard pattern, fixed with the adhesive recommended by the manufacturer and pressed with heavy roller (> 50kg).



Tile Loose-lay 100x100 cm

Supply and installation of woven vinyl flooring Fitnice Chroma (add color) in square format of 100 x 100 cm and 3,35 mm thick, antistatic and flexible. Fabric composed of 91% vinyl and 9% monofilament polyester and backing of vinyl reinforced with fiberglass. Impact sound reduction of 15 dB. Indicated for intensive use according to EN 985: 2002 castor chair test, heavy commercial use according to EN 1307: 2014 standard. With antibacterial behaviour according to ASTM E 2180-07 (2012) and antifungal according to ASTM G21: 2013 standard. Meets the fire resistance requirement (Bfls1) according to EN 13501: 2007. Phthalates and Antimony free. Low level of VOC emissions - Floorscore® certified. Environmental Product Declaration (EPD) available. Installed on a solid, flat, clean, perfectly dry base (3% maximum humidity) and without cracks, according to the UNE-CEN / TS 14472 standard (parts 1 and 4); Indicated to be installed on properly levelled raised access floor. Installed in a checkerboard pattern, fixed with the adhesive recommended by the manufacturer and pressed with heavy roller (> 50kg).



Plank 75x25 cm

Supply and installation of woven vinyl flooring Fitnice Chroma (add color) in plank format of 75 x 25 cm and 2.70 mm thick, antistatic and flexible. Fabric composed of 91% vinyl and 9% monofilament polyester and backing of vinyl reinforced with fiberglass. Impact sound reduction of 14 dB. Indicated for intensive use according to EN 985: 2002 castor chair test, heavy commercial use according to EN 1307: 2014 standard. With antibacterial behaviour according to ASTM E 2180-07 (2012) and antifungal according to ASTM G21: 2013 standard. Meets the fire resistance requirement (Bfls1) according to EN 13501: 2007. Phthalates and Antimony free. Low level of VOC emissions - Floorscore® certified. Environmental Product Declaration (EPD) available. Installed on a solid, flat, clean, perfectly dry base (3% maximum humidity) and without cracks, according to the UNE-CEN / TS 14472 standard (parts 1 and 4); fixed with the adhesive recommended by the manufacturer and pressed with heavy roller (> 50kg).



Plank Loose-lay 75x25 cm

Supply and installation of woven vinyl flooring Fitnice Chroma (add color) in square format of 75 x 25 cm and 3,35 mm thick, antistatic and flexible. Fabric composed of 91% vinyl and 9% monofilament polyester and backing of vinyl reinforced with fiberglass. Impact sound reduction of 15 dB. Indicated for intensive use according to EN 985: 2002 castor chair test, heavy commercial use according to EN 1307: 2014 standard. With antibacterial behaviour according to ASTM E 2180-07 (2012) and antifungal according to ASTM G21: 2013 standard. Meets the fire resistance requirement (Bfls1) according to EN 13501: 2007. Phthalates and Antimony free. Low level of VOC emissions - Floorscore® certified. Environmental Product Declaration (EPD) available. Installed on a solid, flat, clean, perfectly dry base (3% maximum humidity) and without cracks, according to the UNE-CEN / TS 14472 standard (parts 1 and 4); Indicated to be installed on properly levelled raised access floor. Fixed with the adhesive recommended by the manufacturer and pressed with heavy roller (> 50kg).



Diamond 50x50 cm

Supply and installation of woven vinyl flooring Fitnice Chroma (add color) in diamond format with sides of 50 cm and 2.70 mm thick, antistatic and flexible. Fabric composed of 91% vinyl and 9% monofilament polyester and backing of vinyl reinforced with fiberglass. Impact sound reduction of 14 dB. Indicated for intensive use according to EN 985: 2002 castor chair test, heavy commercial use according to EN 1307: 2014 standard. With antibacterial behaviour according to ASTM E 2180-07 (2012) and antifungal according to ASTM G21: 2013 standard. Meets the fire resistance requirement (Bfls1) according to EN 13501: 2007. Phthalates and Antimony free. Low level of VOC emissions - Floorscore® certified. Environmental Product Declaration (EPD) available. Installed on a solid, flat, clean, perfectly dry base (3% maximum humidity) and without cracks, according to the UNE-CEN / TS 14472 standard (parts 1 and 4); fixed with the adhesive recommended by the manufacturer and pressed with heavy roller (> 50kg).



Triangle R 50x50x70,7 cm

Supply and installation of woven vinyl flooring Fitnice Chroma (add color) in triangle format 50 x 50 x 70,70 cm and 2.70 mm thick, antistatic and flexible. Fabric composed of 91% vinyl and 9% monofilament polyester and backing of vinyl reinforced with fiberglass. Impact sound reduction of 14 dB. Indicated for intensive use according to EN 985: 2002 castor chair test, heavy commercial use according to EN 1307: 2014 standard. With antibacterial behaviour according to ASTM E 2180-07 (2012) and antifungal according to ASTM G21: 2013 standard. Meets the fire resistance requirement (Bfls1) according to EN 13501: 2007. Phthalates and Antimony free. Low level of VOC emissions - Floorscore® certified. Environmental Product Declaration (EPD) available. Installed on a solid, flat, clean, perfectly dry base (3% maximum humidity) and without cracks, according to the UNE-CEN / TS 14472 standard (parts 1 and 4); fixed with the adhesive recommended by the manufacturer and pressed with heavy roller (> 50kg).



Triangle E 50x50x50 cm

Supply and installation of woven vinyl flooring Fitnice Chroma (add color) in equilateral triangle format 50 x 50 x 50 cm and 2.70 mm thick, antistatic and flexible. Fabric composed of 91% vinyl and 9% monofilament polyester and backing of vinyl reinforced with fiberglass. Impact sound reduction of 14 dB. Indicated for intensive use according to EN 985: 2002 castor chair test, heavy commercial use according to EN 1307: 2014 standard. With antibacterial behaviour according to ASTM E 2180-07 (2012) and antifungal according to ASTM G21: 2013 standard. Meets the fire resistance requirement (Bfls1) according to EN 13501: 2007. Phthalates and Antimony free. Low level of VOC emissions - Floorscore® certified. Environmental Product Declaration (EPD) available. Installed on a solid, flat, clean, perfectly dry base (3% maximum humidity) and without cracks, according to the UNE-CEN / TS 14472 standard (parts 1 and 4); fixed with the adhesive recommended by the manufacturer and pressed with heavy roller (> 50kg).



Hexagon sides of 30,7 cm

Supply and installation of woven vinyl flooring Fitnice Chroma (add color) in hexagon format 54 x 61,4 cm (sides of 30,70 cm) and 3.35 mm thick, antistatic and flexible. Fabric composed of 91% vinyl and 9% monofilament polyester and backing of vinyl reinforced with fiberglass. Impact sound reduction of 15 dB. Indicated for intensive use according to EN 985: 2002 castor chair test, heavy commercial use according to EN 1307: 2014 standard. With antibacterial behaviour according to ASTM E 2180-07 (2012) and antifungal according to ASTM G21: 2013 standard. Meets the fire resistance requirement (Bfls1) according to EN 13501: 2007. Phthalates and Antimony free. Low level of VOC emissions - Floorscore® certified. Environmental Product Declaration (EPD) available. Installed on a solid, flat, clean, perfectly dry base (3% maximum humidity) and without cracks, according to the UNE-CEN / TS 14472 standard (parts 1 and 4); Indicated to be installed on properly levelled raised access floor. Fixed with the adhesive recommended by the manufacturer and pressed with heavy roller (> 50kg).